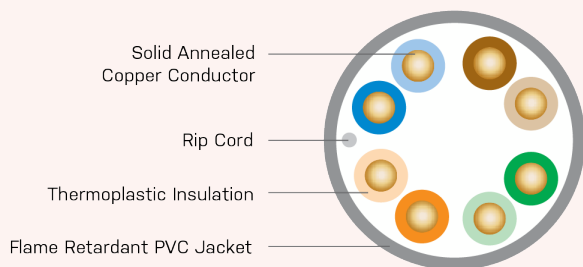
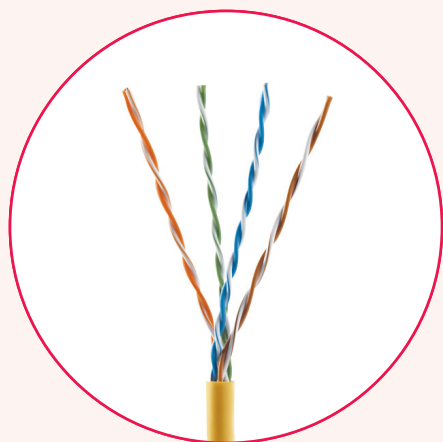


Category 5e 350MHz UTP

U5350-004-xxxx



Description

- Provides exceptional value for jobs that require standards-compliant Category 5e cable at a cost-effective price
- Meets ANSI/TIA-568.2-D performance requirements
- Capable of handling full broadband and baseband video signals
- Every master reel is tested for electrical performance compliance
- QuickCount® footage marketing system shows exact cable remaining for easier installation planning
- WideMouth payout design reduces tension during installation and improves ease of use
- Lightweight, easy-pull design simplifies installation

Application

- 10BASE-T through 1000BASE-T Ethernet
- Power over Ethernet (PoE) — IEEE 802.3bt Type 1 to 4
- ATM and token ring

Certifications



Part Numbers

JACKET COLOR	DESCRIPTION	
	Enhanced Category 5e UTP Cable, 4-Pair, Riser Rated	Enhanced Category 5e UTP Cable, 4-Pair, Plenum Rated
Blue	U5350-004-RBL2	U5350-004-PBL2
White	U5350-004-RWH2	U5350-004-PWH2
Grey	U5350-004-RGY2	U5350-004-PGY2
Black	U5350-004-RBK2	U5350-004-PBK2
Yellow	U5350-004-RYL2	U5350-004-PYL2
Green	U5350-004-RGN2	U5350-004-PGN2
Red	U5350-004-RRD2	U5350-004-PRD2
Orange	U5350-004-ROR2	U5350-004-POR2
Violet	U5350-004-RV12	U5350-004-PV12

Performance Characteristics

FREQUENCY ¹ (MHZ)	INSERTION LOSS @ 20°C MAXIMUM dB/100 m		NEXT MINIMUM dB/100 m		ACR MINIMUM dB/100 m		PSNEXT MINIMUM dB/100 m	
	Specified	Typical	Specified	Typical	Calculated	Typical	Specified	Typical
1	2.0	1.8	65.3	76.8	63.3	81.0	62.3	73.3
4	4.1	3.7	56.3	67.8	52.2	70.1	53.3	66.3
8	5.8	5.4	51.8	63.3	46.0	63.9	48.8	61.8
10	6.5	6.0	50.3	61.8	43.8	61.8	47.3	60.3
16	8.2	7.7	47.2	58.7	39.0	57.0	44.3	57.2
20	9.3	8.6	45.8	57.3	36.5	54.7	42.8	55.8
25	10.4	9.6	44.3	55.8	33.9	52.2	41.3	54.3
31.25	11.7	10.8	42.9	54.4	31.2	49.6	39.9	52.9
62.5	17.0	15.5	38.4	49.9	21.4	40.4	35.4	48.4
100	22.0	19.8	35.3	46.8	13.3	33.0	32.3	45.3
155		24.8		43.9		25.1		42.4
200		28.2		42.3		20.1		40.8
250		31.8		40.8		15.0		39.3
300		35.0		39.6		10.6		38.1
350		38.3		38.6		6.3		37.1

FREQUENCY ¹ (MHZ)	PSACR MINIMUM dB/100 m		RETURN LOSS MINIMUM dB/100 m		ELFEXT MINIMUM dB/100 m		PSELFEXT MINIMUM dB/100 m	
	Calculated	Typical	Specified	Typical	Specified	Typical	Specified	Typical
1	60.3	78.3	20.0	33.0	63.8	74.6	60.8	69.3
4	49.2	67.4	23.0	36.0	51.8	62.6	48.8	57.3
8	43.0	61.2	24.5	37.5	45.7	56.5	42.7	51.2
10	40.8	59.1	25.0	38.0	43.8	54.6	40.8	49.3
16	36.1	54.3	25.0	38.0	39.7	50.5	36.7	45.2
20	33.5	52.0	25.0	38.0	37.8	48.6	34.8	43.3
25	30.9	49.5	24.3	37.3	35.8	46.6	32.8	41.3
31.25	28.2	46.9	23.6	36.6	33.9	44.7	30.9	39.4
62.5	18.4	37.7	21.5	34.5	27.9	38.7	24.9	33.4
100	10.3	30.3	20.1	33.1	23.8	34.6	20.8	29.3
155		22.4		31.8		30.8		25.5
200		17.4		31.0		28.6		23.3
250		12.3		30.3		26.6		21.3
300		7.9		29.8		25.1		19.8
350		3.6		29.3		23.7		18.4

¹Value above 550Mhz are for informational purposes only

Technical Details

ITEM	UNIT	CMR (RISER)	CMP (PLENUM)
Conductor DC Resistance	Ohms/100 m	9.38	9.38
Resistance Unbalance	%	5	5
Mutual Capacitance	nF/100 m	5.6	5.6
Capacitance Unbalance	pF/100 m	330	330
Delay Skew	ns	45	45
Nominal Velocity of Propagation	%		68
Operating Temperature	°F (°C)	-4 to +140 (-20 to +60)	-4 to +140 (-20 to +60)
Storage Temperature	°F (°C)	-4 to +176 (-20 to +80)	-4 to +176 (-20 to +80)
Bending Radius		4 x Cable diameter	4 x Cable diameter
Packaging:	Type		1,000 ft POP box
	Weight	lb/kft (kg/km)	19 (28)
	Packages Per Pallet		45
Materials:	Conductors		24 AWG, Solid annealed copper
	Insulation		Thermoplastic
	Jacket		Low smoke PVC (Plenum Rated)
	Nominal Diameter	in (mm)	0.19 (4.8)
Approvals:	Safety		UL 444, NFPA 262, CSA C22.2 No. 214-08
	Performance		ANSI/TIA-568.2-D